



**KEMENTERIAN RISET, TEKNOLOGI, DAN PENDIDIKAN TINGGI**  
**UNIVERSITAS BRAWIJAYA**  
**FAKULTAS KEDOKTERAN**  
**PROGRAM MAGISTER ILMU BIOMEDIS**

Jalan Veteran, Malang 65145, Jawa Timur – Indonesia  
 Telp. (62)(341) 569117; 567192 Pes. 134, 135 – Fax. (62)(341) 564755  
 E-mail: [sekr.fk@ub.ac.id](mailto:sekr.fk@ub.ac.id) Website: <http://biomedical.fk.ub.ac.id>

**Course Performance Evaluation**

**Odd Semester of Academic Year 2015/2016**

No.	Course Performance Criteria	Score				
		1	2	3	4	
<b>A.</b>	<b>Course Benefits (<i>Manfaat Mata Kuliah</i>)</b>					
1	Improved knowledge literacy <i>Meningkatkan pengetahuan</i>					
2	Developed biomedical-specific skills <i>Mengembangkan keterampilan khusus biomedik</i>					
3	Developed generic skills <i>Mengembangkan keterampilan umum</i>					
4	Encouraged attitude (ethical standards for the intellectual and professional activities) <i>Meningkatkan sikap (standar etika dalam kegiatan intelektual dan profesional)</i>					
5	Very useful for our profession <i>Sangat bermanfaat bagi profesi kami</i>					
<b>B.</b>	<b>Course Content (<i>Isi Mata Kuliah</i>)</b>					
6	In accordance with the recent development of biomedical sciences and technology <i>Sesuai dengan perkembangan terbaru dari ilmu biomedis dan teknologi</i>					
7	Support the achievement of program learning outcomes <i>Mendukung pencapaian capaian pembelajaran program studi</i>					
8	Provided systematically in accordance with the course learning outcomes <i>Diberikan secara sistematis sesuai dengan capaian pembelajaran mata kuliah</i>					
<b>C.</b>	<b>Organization and Process of Teaching and Learning (<i>Organisasi dan Proses Belajar Mengajar</i>)</b>					
9	Teaching plan was given before the course begins Rencana Pembelajaran Semester (RPS) diberikan sebelum mata kuliah dimulai					
10	Course learning outcomes were clearly informed <i>Capaian pembelajaran mata kuliah diinformasikan dengan jelas</i>					
11	The course was held on schedule <i>Mata kuliah dilaksanakan sesuai jadwal</i>					
12	Applied student-centered learning to develop the creativity, capacity, personality, and self-reliance in searching and finding knowledge <i>Menerapkan pembelajaran berpusat pada mahasiswa untuk mengembangkan kreativitas, kapasitas, kepribadian, dan kemandirian dalam mencari dan menemukan pengetahuan</i>					
13	Learning process prioritized a two-way process of interaction between students and lecturers <i>Proses pembelajaran mengutamakan proses interaksi dua arah antara mahasiswa dan dosen</i>					
14	Learning process encouraged the development of a scientific thinking and was adapted to the demands of problem-solving skills in the field of biomedical sciences					



**KEMENTERIAN RISET, TEKNOLOGI, DAN PENDIDIKAN TINGGI**  
**UNIVERSITAS BRAWIJAYA**  
**FAKULTAS KEDOKTERAN**  
**PROGRAM MAGISTER ILMU BIOMEDIS**

Jalan Veteran, Malang 65145, Jawa Timur – Indonesia  
 Telp. (62)(341) 569117; 567192 Pes. 134, 135 – Fax. (62)(341) 564755  
 E-mail: [sekr.fk@ub.ac.id](mailto:sekr.fk@ub.ac.id) Website: <http://biomedical.fk.ub.ac.id>

	<i>Proses pembelajaran mendorong terbentuknya pola pikir ilmiah dan disesuaikan dengan tuntutan kemampuan menyelesaikan masalah dalam bidang ilmu biomedik</i>					
15	Learning process prioritized the scientific approach to creating an academic environment based on a system of values, norms, and rules of science <i>Proses pembelajaran mengutamakan pendekatan ilmiah sehingga tercipta lingkungan akademik yang berdasarkan sistem nilai, norma, dan kaidah ilmu pengetahuan</i>					
16	Learning process was adapted to the field of biomedical sciences and related to the real problems <i>Proses pembelajaran disesuaikan dengan karakteristik keilmuan biomedik dan dikaitkan dengan permasalahan nyata</i>					
17	Course learning outcomes were achieved effectively through the internalization of the content during the optimum period of study <i>Capaian pembelajaran mata kuliah diraih secara berhasil guna dengan mementingkan internalisasi materi dalam kurun waktu yang optimum</i>					
18	Learning process involved interaction between the learners to achieve the expected knowledge, skills, and attitudes <i>Proses pembelajaran melibatkan interaksi antar individu pembelajar untuk mencapai pengetahuan, keterampilan, dan sikap yang diharapkan</i>					
<b>D.</b>	<b>Assignment and Assessment (<i>Tugas dan Penilaian</i>)</b>					
19	Assignments supported the achievement of course learning outcomes <i>Tugas-tugas mendukung pencapaian capaian pembelajaran mata kuliah</i>					
20	Used various assessment methods agreed between lecturers and students <i>Menggunakan berbagai metode penilaian yang telah disepakati dosen dan mahasiswa</i>					
21	Applied criterion-referenced assessment using rubric (fair and objective) <i>Menerapkan penilaian berbasis kriteria menggunakan rubrik (adil dan obyektif)</i>					
22	Assessment motivate students to be able to improve the way of learning and achieve the course learning outcomes <i>Penilaian memotivasi mahasiswa agar mampu memperbaiki cara belajar dan meraih capaian pembelajaran mata kuliah</i>					
23	Assessment oriented in continuous learning process and the achievement of course learning outcomes <i>Penilaian berorientasi pada proses belajar yang berkesinambungan dan pencapaian capaian pembelajaran mata kuliah</i>					
24	The procedures and results of the assessment can be accessed by students <i>Prosedur dan hasil penilaian dapat diakses oleh mahasiswa</i>					
<b>TOTAL SCORE</b>						



KEMENTERIAN RISET, TEKNOLOGI, DAN PENDIDIKAN TINGGI  
UNIVERSITAS BRAWIJAYA  
FAKULTAS KEDOKTERAN

**PROGRAM MAGISTER ILMU BIOMEDIS**

Jalan Veteran, Malang 65145, Jawa Timur – Indonesia  
Telp. (62)(341) 569117; 567192 Pes. 134, 135 – Fax. (62)(341) 564755  
E-mail: [sekr.fk@ub.ac.id](mailto:sekr.fk@ub.ac.id) Website: <http://biomedical.fk.ub.ac.id>

---

## The Results

### Overall Score

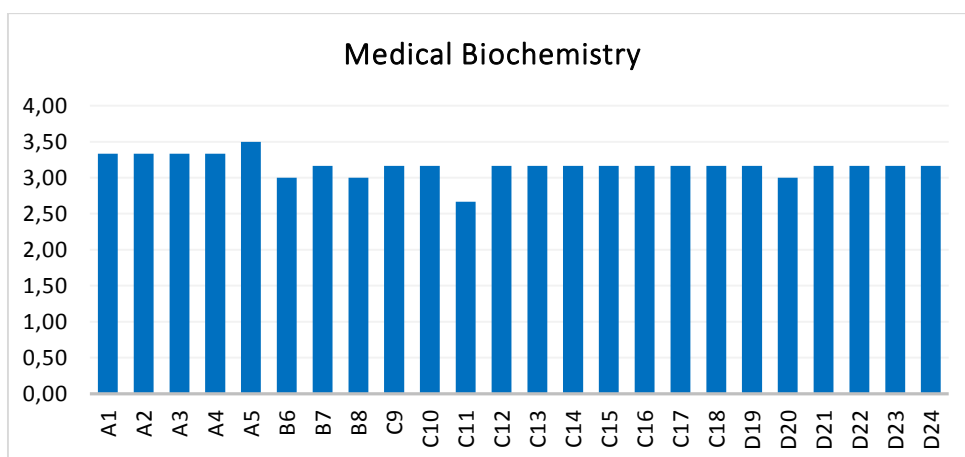
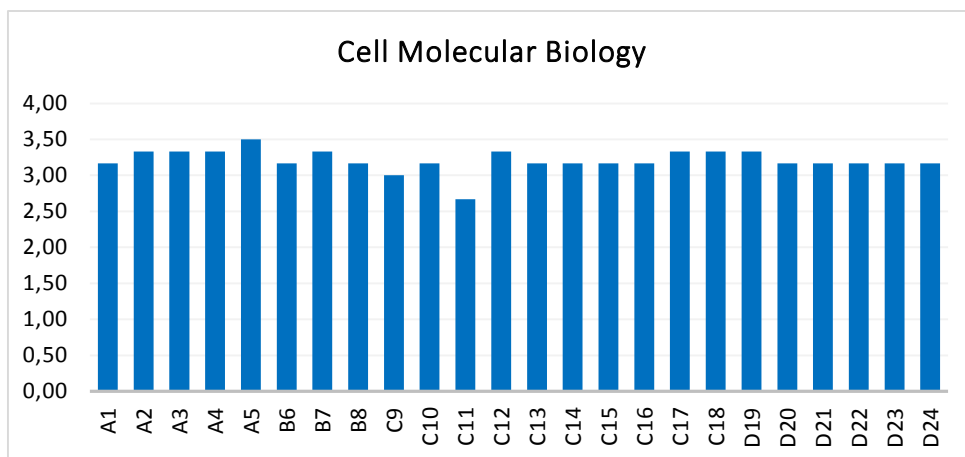
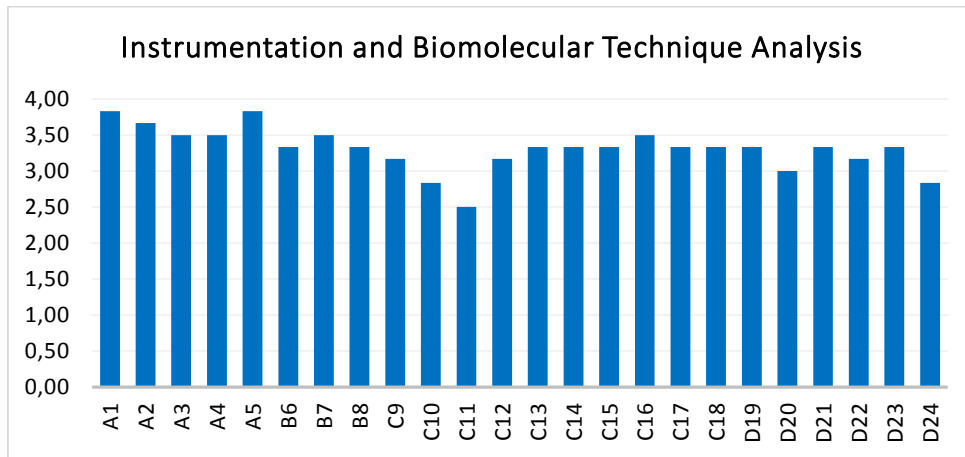
No.	Courses	Overall Score (Range 1-4)
<b>Compulsory Courses</b>		
1.	Instrumentation and Biomolecular Technique Analysis	3.31
2.	Cell Molecular Biology	3.21
3.	Medical Biochemistry	3.17
4.	Molecular Genetics	3.28
5.	Basic Immunology	3.18
6.	Research Methodology, Biostatistics, and Scientific Writing	3.19
<b>Interest-Based Compulsory Courses</b>		
7.	Pharmacology and Molecular Physiology	3.04
8.	Toxicology	3.05
9.	Pathobiology	3.19
10.	Bioscience and Biotechnology	3.31
11.	Bioinformatics in Biomedical Field	3.22
<b>Elective Courses</b>		
12.	Diabetes Pathobiology and Complication	2.96
13.	Free Radicals in Biology and Diseases	3.14
14.	Traditional Medicine Development and Biotechnology	3.05



KEMENTERIAN RISET, TEKNOLOGI, DAN PENDIDIKAN TINGGI  
UNIVERSITAS BRAWIJAYA  
FAKULTAS KEDOKTERAN  
**PROGRAM MAGISTER ILMU BIOMEDIS**

Jalan Veteran, Malang 65145, Jawa Timur – Indonesia  
Telp. (62)(341) 569117; 567192 Pes. 134, 135 – Fax. (62)(341) 564755  
E-mail: [sekr.fk@ub.ac.id](mailto:sekr.fk@ub.ac.id) Website: <http://biomedical.fk.ub.ac.id>

**Compulsory Courses**

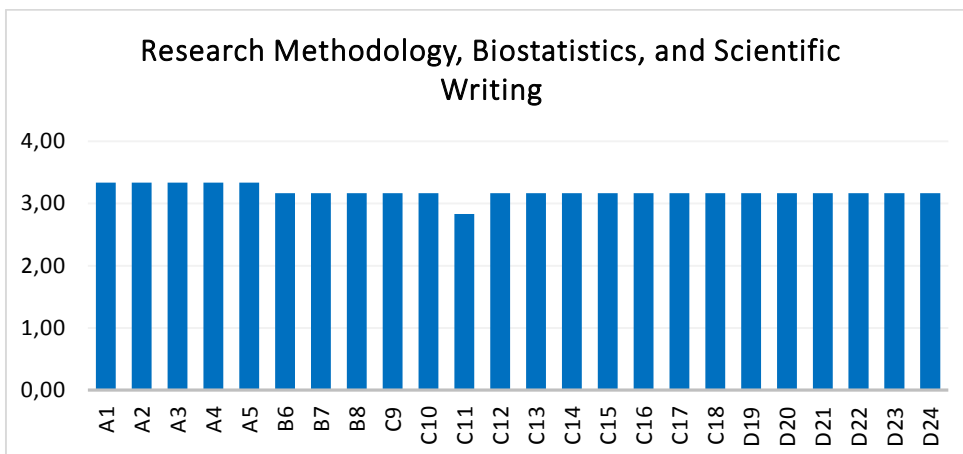
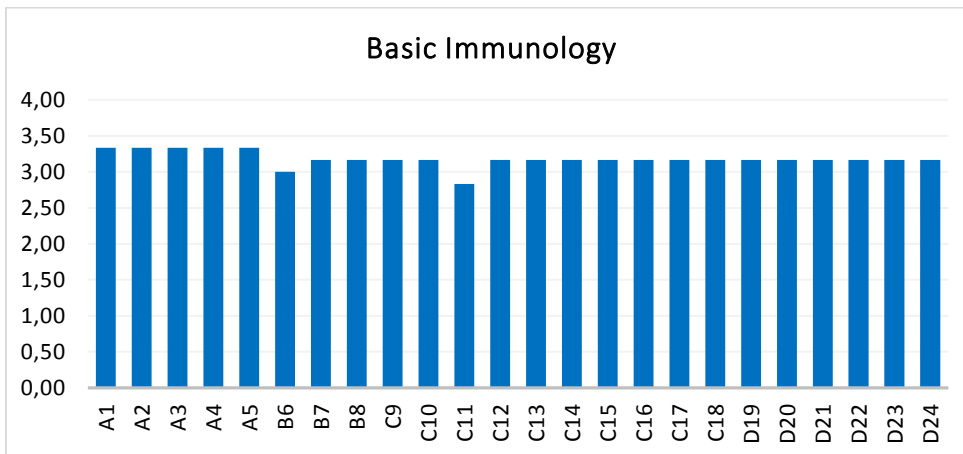
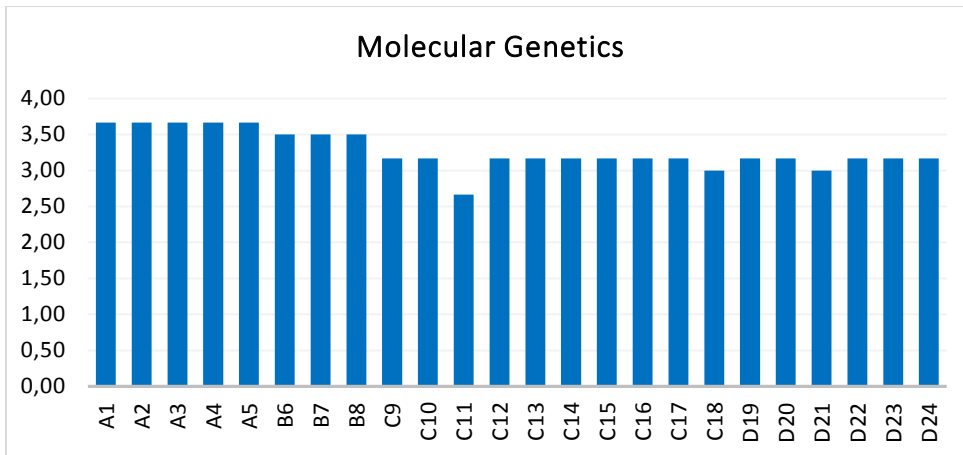




KEMENTERIAN RISET, TEKNOLOGI, DAN PENDIDIKAN TINGGI  
UNIVERSITAS BRAWIJAYA  
FAKULTAS KEDOKTERAN

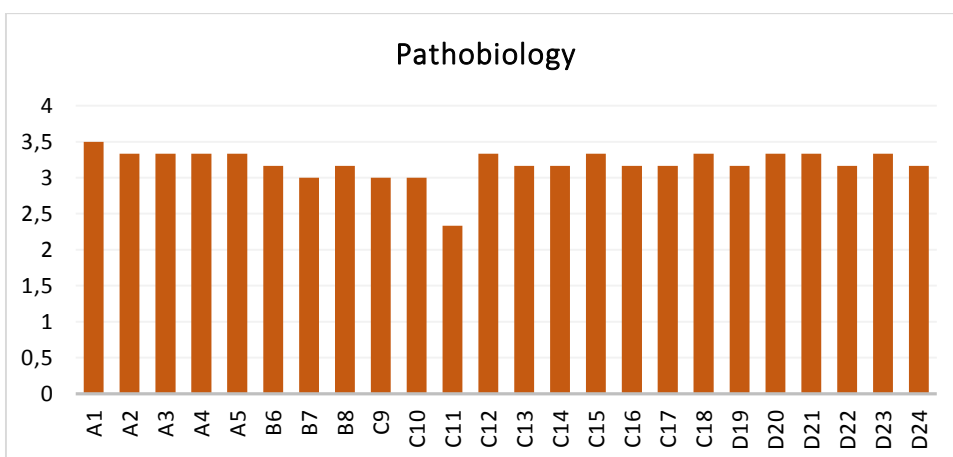
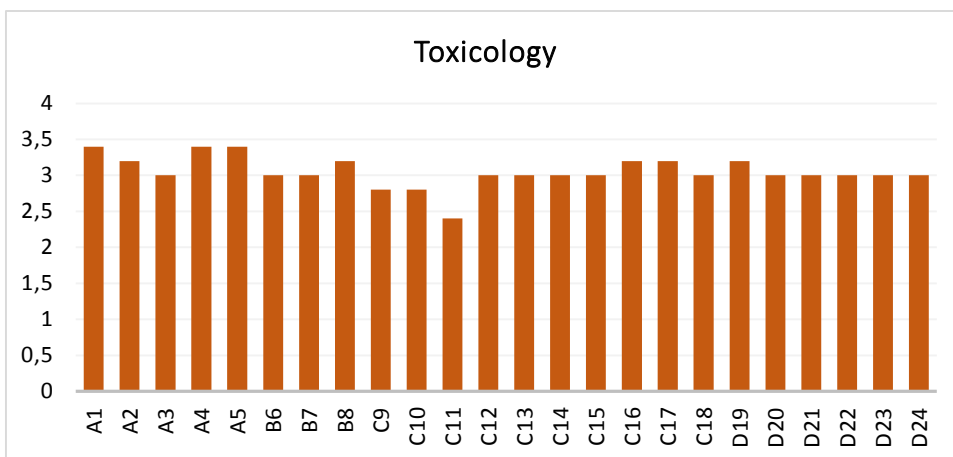
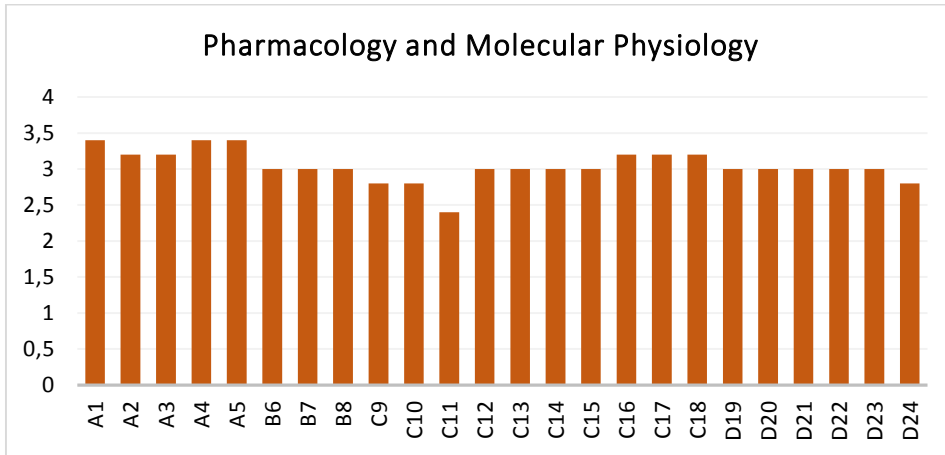
**PROGRAM MAGISTER ILMU BIOMEDIS**

Jalan Veteran, Malang 65145, Jawa Timur – Indonesia  
Telp. (62)(341) 569117; 567192 Pes. 134, 135 – Fax. (62)(341) 564755  
E-mail: [sekr.fk@ub.ac.id](mailto:sekr.fk@ub.ac.id) Website: <http://biomedical.fk.ub.ac.id>





### Interest-Based Compulsory Courses

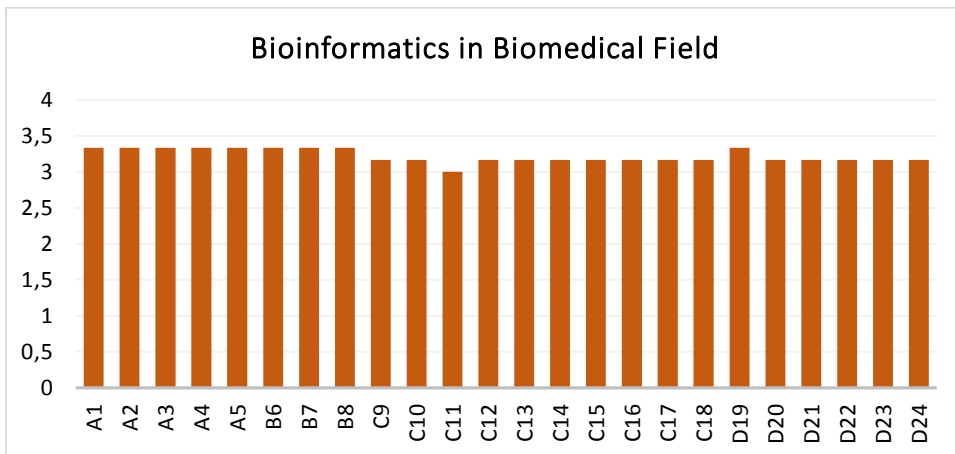
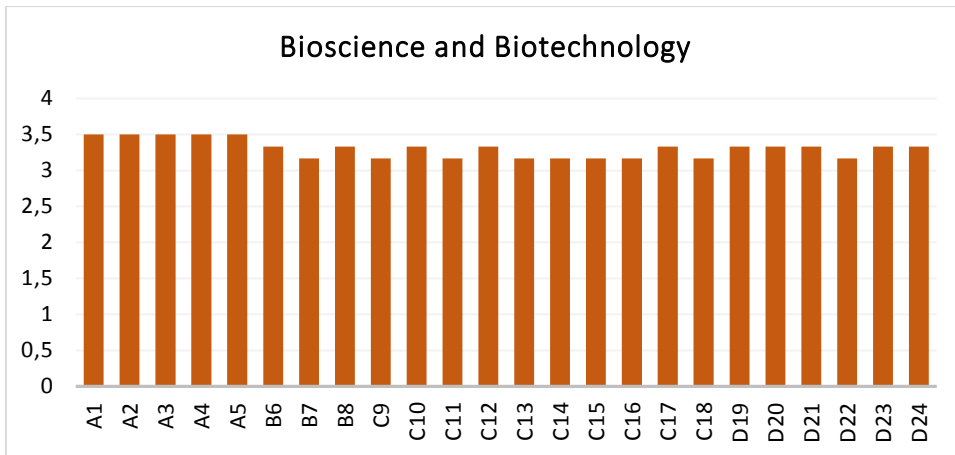




KEMENTERIAN RISET, TEKNOLOGI, DAN PENDIDIKAN TINGGI  
UNIVERSITAS BRAWIJAYA  
FAKULTAS KEDOKTERAN

**PROGRAM MAGISTER ILMU BIOMEDIS**

Jalan Veteran, Malang 65145, Jawa Timur – Indonesia  
Telp. (62)(341) 569117; 567192 Pes. 134, 135 – Fax. (62)(341) 564755  
E-mail: [sekr.fk@ub.ac.id](mailto:sekr.fk@ub.ac.id) Website: <http://biomedical.fk.ub.ac.id>





## Elective Courses

